

CONICAL IMPLANTS

MEDIUM SIZE THREAD

TIPOLOGY Conical implants are suited for every bone class, and we offer a wide range of fixtures and measures to satisfy any possible need of rehabilitation, with machined trans-mucous collar or bone level.

SURGERY Designed to be employed both in flap as well as in flapless technique, conical implants are suited for immediate loading as long as the implant has an optimal primary stability and a minimal length of 11,5 mm. Root shaped, they can be insert even using just the bone expanders, with an a-traumatic technique.

ADVANCED TECHNIQUES Safer Sinus-Lifts, thanks to the conical shape, avoiding the risk of penetration in the maxillary sinuses.

1 SWITCHING PLATFORM

- Optimal prosthetic choices, respecting the parallelism
- Widen contact area between implant surface and abutment
- Internal NORMAL connection 4 and 4,5 mm diam.
- Internal LARGE connection for molar region 5-6 mm diam.

2 TRANSMUCOSAL MACHINED COLLAR

- Maximum support for soft tissues
- Standard height 1,3 mm
- Lower crestal reabsorption in post extractive sockets
- Better hygienic management even in case of peri-implantitis
- Microthread for optimal fastening of the fixture on cortical bone
- Optimal load distribution, preserving the bone crest

3 MACHINED COLLAR BONE LEVEL

- Improved collar microthread for optimal fastening of the fixture on cortical bone
- Better management of the soft tissue for esthetic regions.

4 TRIPLE DECOMPRESSION INCISION ALONG THE ENTIRE SURFACE

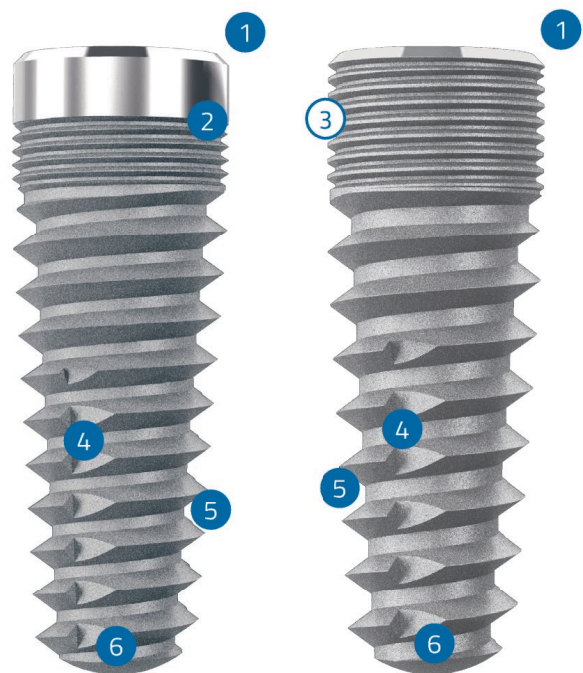
- Enables clot outflow and avoids the rotation of the implant in the second phase surgery

5 CONICAL SHAPED BODY AND MACRO-THREAD

- Expansion in soft bone
- Compacting the bone
- Root shaped

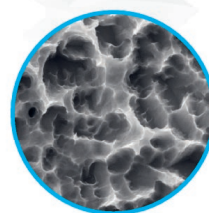
6 ATRAUMATIC PENETRATING APEX

- Allows the implant to penetrate underprepared sites
- Helps lifting the sinus maxillary membrane
- Avoids perforation risks



TI_c

TI_c-BL



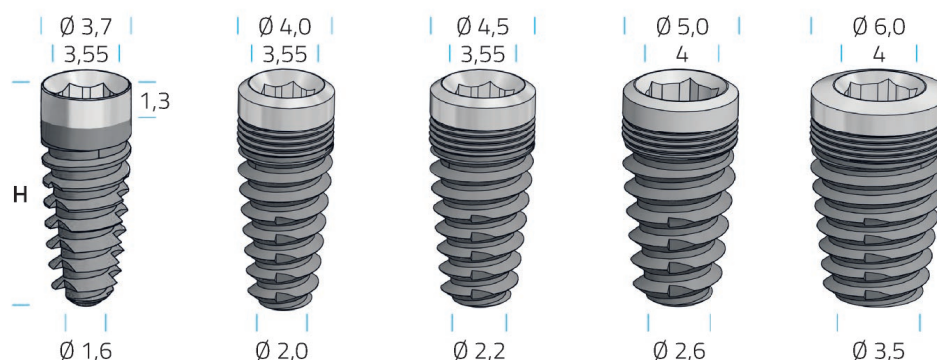
ACID ETCHED
SURFACE



Kits and instruments pag. 70
Prosthetic components pag. 91

TI_c Conical implants, medium thread

Measurements and codes

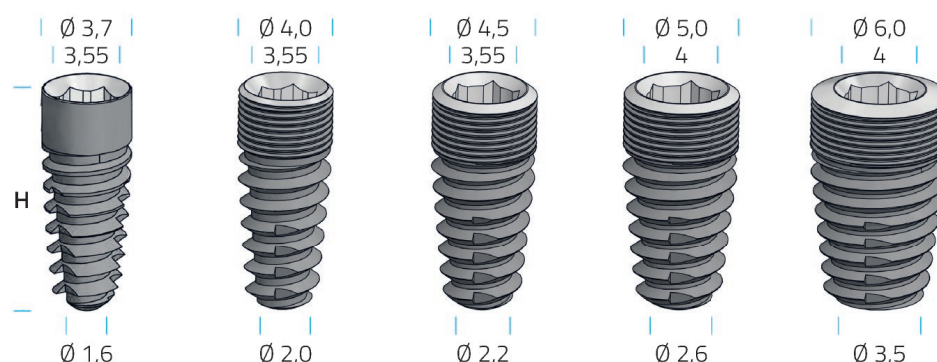


H	Ø 3,5 ■ *	Ø 4,0 ■	Ø 4,5 ■	Ø 5,0 ■	Ø 6,0 ■
8,5 mm	-	TIDc-8,5	TILc-8,5	TICc-8,5	TIGc-8,5
10,0 mm	TIBc-10	TIDc-10	TILc-10	TICc-10	TIGc-10
11,5 mm	TIBc-11,5	TIDc-11,5	TILc-11,5	TICc-11,5	TIGc-11,5
13,0 mm	TIBc-13	TIDc-13	TILc-13	TICc-13	TIGc-13
14,5 mm	TIBc-14,5	TIDc-14,5	TILc-14,5	-	-
Platform	Normal	Normal	Normal	Large	Large

*The implant fixture with 3,5 diameter is also available with diameter 4,0 neck, height 10-11-12-14-16 mm.

TI_c-BL Bone level conical implants with medium thread

Measurements and codes



H	Ø 3,5 ■ *	Ø 4,0 ■	Ø 4,5 ■	Ø 5,0 ■	Ø 6,0 ■
8,5 mm	-	TIDc-8,5-BL	TILc-8,5-BL	TICc-8,5-BL	TIGc-8,5-BL
10,0 mm	TIBc-10-BL	TIDc-10-BL	TILc-10-BL	TICc-10-BL	TIGc-10-BL
11,5 mm	TIBc-11,5-BL	TIDc-11,5-BL	TILc-11,5-BL	TICc-11,5-BL	TIGc-11,5-BL
13,0 mm	TIBc-13-BL	TIDc-13-BL	TILc-13-BL	TICc-13-BL	TIGc-13-BL
14,5 mm	TIBc-14,5-BL	TIDc-14,5-BL	TILc-14,5-BL	-	-
Platform	Normal	Normal	Normal	Large	Large

*The implant fixture with 3,5 diameter is also available with diameter 4,0 neck, height 10-11-12-14-16 mm.

Normal

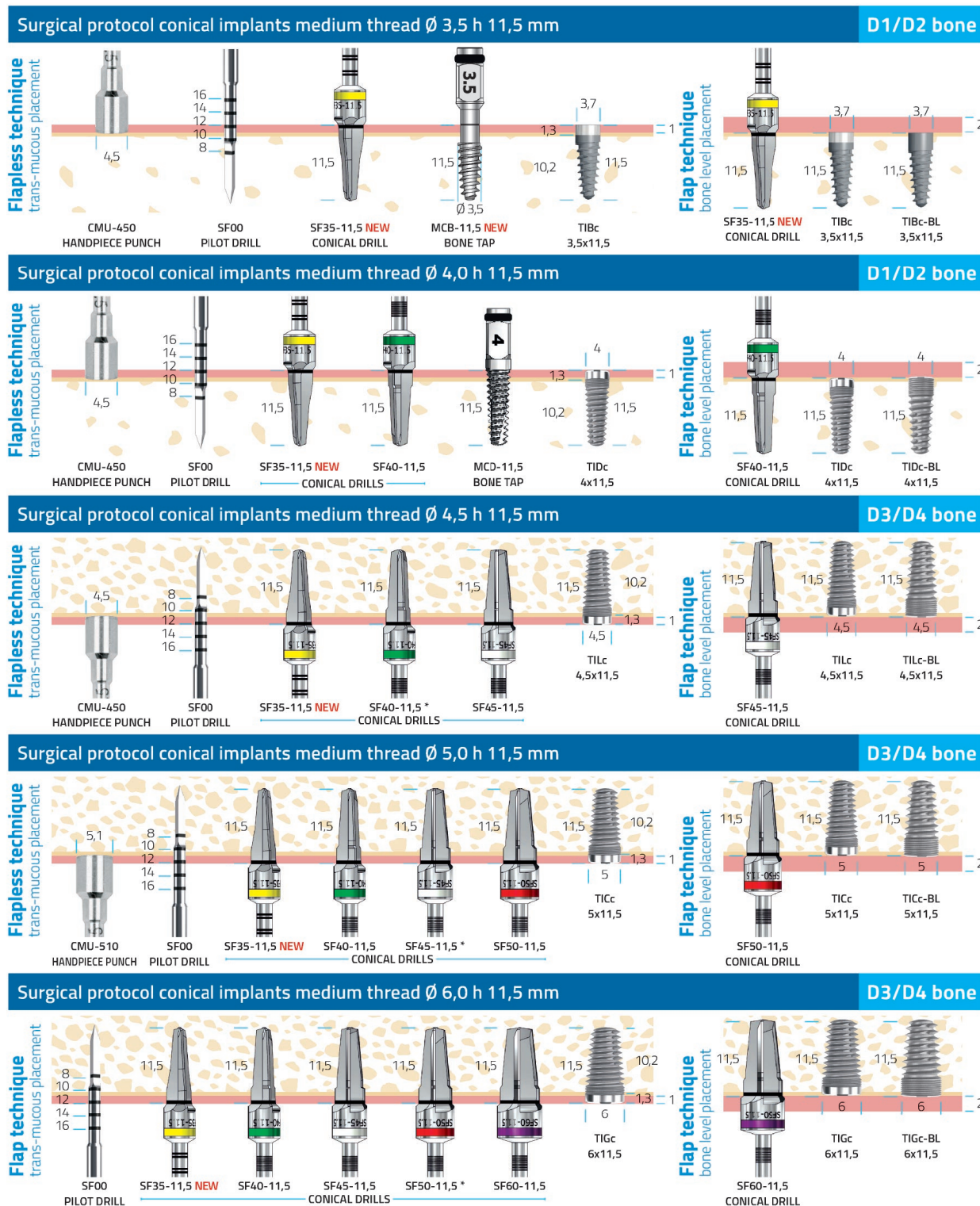
Large

Surgical protocol conical implants medium thread

Kits and instruments pag. 70

Sequence for mandibular bone D1/D2 and maxillary bone D3/D4

Conical implants with medium threads come in two variants: trans-mucous and bone level. The first step is to measure the gum thickness with a periodontal probe. With a maximum of 1 mm gum thickness, flapless technique with the use of the punch can be pursued, otherwise flap technique is suggested, to obtain the right placement for the neck of the fixture. Trans-mucous fixtures can be placed at bone level with flap technique.



Protocols and sequences are just suggested with an illustrative purpose. It's up to the surgeon to select the best surgical option for the anatomy of the patient.

* On D3-D4 bone intermediate drills must be employed

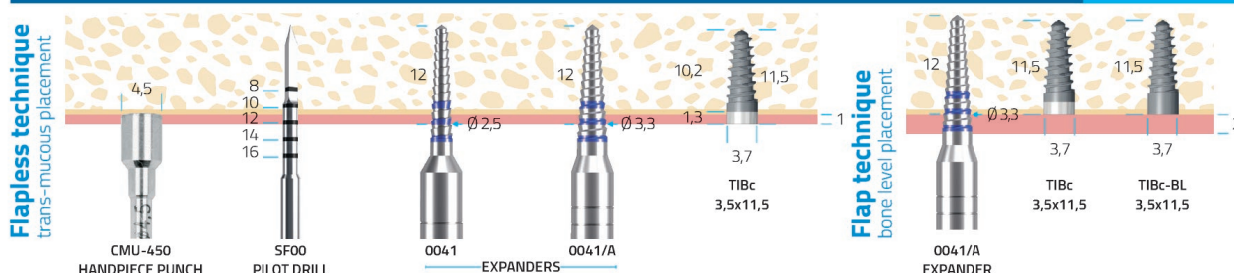
Surgical protocol conical implants medium thread

Sequence for maxillary bone D3/D4

Conical implants with medium threads come in two variants: trans-mucous and bone level. Trans-mucous fixtures can be placed at bone level with flap technique. The first step is to measure the gum thickness with a periodontal probe. With a maximum of 1 mm gum thickness, flapless technique with the use of the punch can be pursued, otherwise flap technique is suggested, to obtain the right placement for the neck of the fixture.

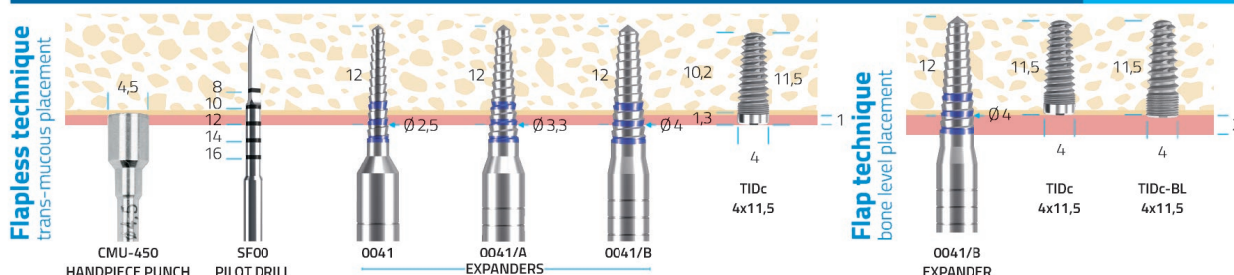
Surgical protocol for medium thread conical implants \varnothing 3,5 h 11,5 mm

D3/D4 Bone



Surgical protocol for medium thread conical implants \varnothing 4 h 11,5 mm

D3/D4 Bone

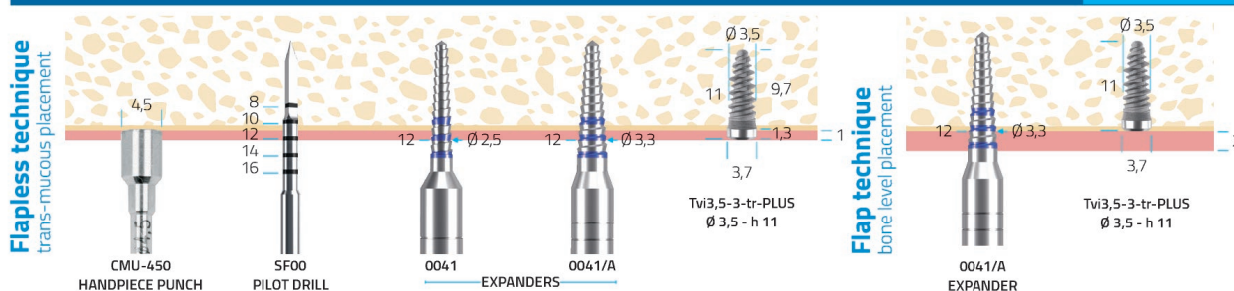


Surgical protocol large thread conical implants

Sequence for maxillary bone D3/D4

Conical implant Plus internal hexagon trans-mucous with double thread, \varnothing 3,5 h 11,5 mm

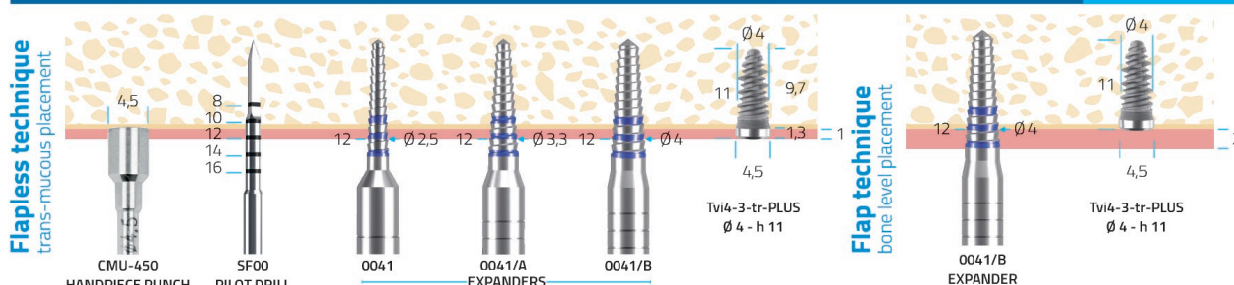
D3/D4 Bone



With gums more than 1 mm high, flap technique is suggested to obtain the right placement for the neck of the fixture.

Conical implant Plus internal hexagon trans-mucous with double thread, \varnothing 4 - 3 threads h 11 mm

D3/D4 Bone



With gums more than 1 mm high, flap technique is suggested to obtain the right placement for the neck of the fixture.

Protocols and sequences are just suggested with an illustrative purpose. It's up to the surgeon to select the best surgical option for the anatomy of the patient.